

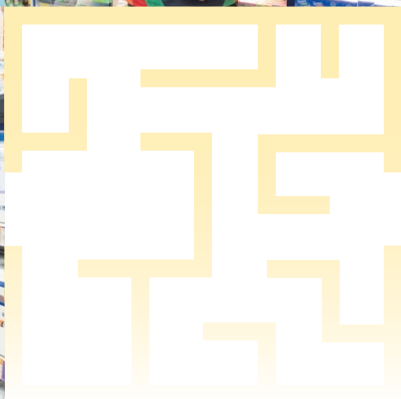
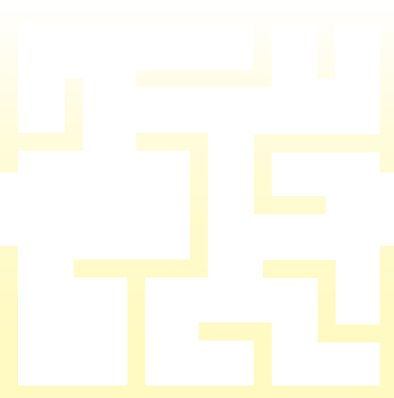


明途聯繫
SUBSIDIARY OF MHAHK
MENTALCARE

市無常
隨機應變

Stay Agile in
Market
Uncertainty

23-24年報
ANNUAL REPORT





目錄 Content

04	主席序言	Foreword by the Chairman
06	行政總裁報告	CEO Report
10	願景、使命與核心價值	Vision, Mission & Core Values
11	社會效益亮點 2002-2024	Social Impact Highlights 2002-2024
12	組織架構	Organizational Chart
13	員工團隊	Staff Team
15	業務發展	Business Development
18	業務版圖	Business Presence
21	價值共創	Co-creation of Value
22	企業成就及嘉許	Corporate Achievements and Recognitions
24	業界交流及培訓	Sector's Sharing and Training
28	員工參與及成就	Employee Participation & Achievement
31	財務回報 2023-2024	Financial Return 2023-2024
32	核數報告 2023-2024	Audit Report 2023-2024
33	鳴謝	Acknowledgements
37	聯絡我們	Contact Us

主席序言 Foreword By The Chairman



明途聯繫有限公司
董事會主席
黎守信醫生
Dr. Benjamin Lai
Chairman, Board of Directors
MentalCare Connect Company Limited

縱使本地經濟前景不明朗，香港各行各業面臨不同程度困難，零售市場消費者的消費模式亦發生轉變。2023-2024 年度是經歷了新冠疫情後充滿挑戰的一年，然而我仍懷着喜悅的心情向大家公報明途聯繫有限公司第二十二份年報。

感謝政府持續的財政支持和公司員工的無私奉獻和辛勤工作，我很高興與大家分享「明途聯繫」過去一年的驕人業績。在 2023 -2024 年度，公司總收入為 1.88 億港元，較上年增長 9.9%，稅前淨利約 156 萬港元。截至 2024 年 3 月 31 日財政年度結束時，員工人數為 220 人，其中超過 70% 的員工為精神復元人士及弱勢社群，年內提供實習工作崗位為 259 人次。在這個財政年度，公司共營運 35 個店舖及社企項目，當中包括新開設 1 間分店及替 7 間店舖續上新的租約。「明途聯繫」除致力於公立醫院內開設店舖為病人及其親屬、員工和顧客提供服務外，仍將物色合適的商機在醫院以外擴展其零售版圖。

在「思健」慈善基金的支持下，公司開展管理其中一間 7-11 的營運，並聘請了一名半職社工，以幫助精神復元人士及弱勢社群在康復的過程中能夠適應工作環境。這展示了商界企業與社企在提供工作崗位及有關配套在協助復元人士康復的過程中產生正面的積極成果。此類合作亦正進一步加強並擴展。公司將繼續與其他社會企業共同努力，履行社會責任，並支持弱勢社群。

我謹代表董事會感謝民政事務及青年事務局、社會福利署、醫院管理局、供應商、各榮譽顧問及其他持份者一直以來對「明途聯繫」的支持及建議。董事會感謝鍾偉成先生及其團隊在公司的成功上付出的努力和承擔。本人謹此感謝董事會成員對公司深具遠見的建議和不懈的支持。



I am delighted to present to you the twenty second annual report of MentalCare Connect Company Limited after a challenging year following the COVID pandemic with the uncertain outlook of local economy, difficulties faced by various business sectors in Hong Kong and changes in consumer pattern in the retail industry in 2023-2024.

Thanks to the continual financial support by the Government and the dedication and hard work of the staff of the Company. I am pleased to share with you the strong performance of the Company over the past year. The gross income of the Company is \$188 million Hong Kong dollars representing a 9.9% increase over the preceding year and a net profit before tax of about \$1.56 million dollars. At the end of the financial year ending on 31 March 2024 the number of employee is 220 with over 70% of the employees being from the disabled and disadvantaged group. The number of placement attendances provided to disabled persons for gaining experience in the year is 259. As of 31 March 2024 there are 35 shops and projects under the Company including 1 new shop and 7 re-new projects in the past one year. The Company has maintained its commitment to the provision of business outlets and services to patients, relatives, staff and customers inside the public hospitals. The Company will look forward to suitable opportunities in expanding its shops outside of the hospitals.

Thanks to the support of Mindset the Company has embarked on the management of 7-Eleven with the input of a part time social worker to facilitate the adjustment of the disadvantaged persons in the work environment during the course of their rehabilitation. This collaborative efforts by a corporation and a social enterprise in the facilitation of the rehabilitation of the ex-mentally ill has brought positive impact to the disadvantaged persons. Further expansion of such collaborative efforts is in the pipeline.

The Company will continue the joint efforts with other social enterprises in the promotion of social responsibilities and support of the disadvantaged persons.

On behalf of the Board I would like to thank the Home and Youth Affairs Bureau, Social Welfare Department, the Hospital Authority, suppliers, honorary advisors and other stakeholders for their continual support and advice to the Company. The Board is grateful to Mr. Chung Wai Shing and his staff for their dedication and hard work for the success of the Company. I wish to thank members of the Board for their insightful advice and untiring support to the Company.

行政總裁報告 CEO Report



明途聯繫有限公司
行政總裁
鍾偉成先生
Mr. Chung Wai Shing
Chief Executive Officer
MentalCare Connect
Company Limited



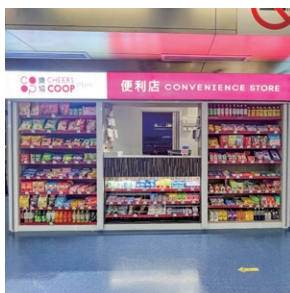
抗疫三年，隨著新冠疫情落幕，各界憧憬著社會及各種經濟活動全面復常，做生意的當然希望 23-24 年度的營業額可回復至疫情及社會運動以前，誰不知一切竟不似預期。移民潮、網購成風、北上消費及旅客消費模式轉變，在在影響餐飲及零售業務的復常能力，更導致新一輪的店舖結業潮。面對市場的無常，加上政府及醫管局轄下店舖的租金寬減措施於 2023 年 12 月完結，大大增加公司的營運成本，也影響了公司在社區擴展業務的步伐。

履行核心價值

至 2024 年 3 月止，「明途聯繫」營運的社企項目有 35 個，共聘用 220 位僱員，其中 157 位來自弱勢社群（其中 144 位是殘疾人士），佔僱員人數的 71%，是年度各機構轉介到公司及轄下店舖實習的學員達 259 人次。7-Eleven x Mindset x MentalCare 的合作計劃取得十分正面的成果，據計劃的中期檢討報告顯示，僱員在社工的支援下，在紓緩緊張情緒壓力、情緒困擾、提升職場競爭力及提高就業穩定性方面都有預期的提升作用。

財務報告

2023-2024 年度，公司總收入為港幣 188,099,569，同比增長 9.9%，其中「創業展才能」計劃及「伙伴倡自強」社區協作計劃共資助港幣 1,972,376，作為多項社企項目的種籽基金，約佔整體收入的 1.05%。公司稅後盈利為港幣 1,464,199。隨著醫院取消「緊急應變級別」措施，醫院人流顯著回升，營業額亦隨之增加。雖然同比的銷售收入增加，但政府及醫管局亦於 12 月取消對轄下店舖的租金寬減及一次性的員工薪酬資助，令 2023-2024 年度的盈利銳減 5 成多。



業務發展

■ 復康店 / 便利店業務

隨著醫院解除「緊急應變級別」措施，探病時間及非緊急醫療服務復常，令醫院人流大大增加，營業額進一步提升。當醫院店舖生意逐漸復常，在此消彼長的情況下，社區店舖的收入略受影響。期內多間醫院店舖重新招標，同事們排除萬難，最終所有投標都告成功，包括屯門醫院、明愛醫院、東區醫院及瑪嘉烈醫院的復康店及便利店。另邊廂，位於銅鑼灣的「卓思廊」卻因生意欠佳而結束營業。

■ 合作社 / 樂協業務

疫情結束，位於醫管局大樓的職員合作社仍面對嚴峻的挑戰，營業額遠低於疫情及社會運動前。另外，位於灣仔人民入境大樓的「樂協」社團優惠坊經營3年後被政府徵用作其他用途，而軒尼詩道的「樂協」同樣因生意未如理想而結業。可幸是公司透過產業署的「關愛社區租務安排」，於九月中在香港信德中心港澳碼頭的乘客等候區開辦「樂協」便利店，吸納部份員工讓他們不致失業。

■ 7-Eleven x Mindset x MentalCare

將軍澳醫院 7-Eleven 經過一年多的營運後，證實三方協作模式成功支援精神復元人士持續就業，業績表現也合乎理想，三方共識於 2024-2025 年度開辦 1 間 7-Eleven，以聘用更多精神復元人士。

展望

縱觀整體經濟及市場狀況，公司仍能站穩陣腳，實有賴各級員工的努力和顧客的長期支持。2023-2024 年感恩在艱難的日子，公司仍能保持盈利，展望 2024-2025 年，零售及餐飲業將面對重大挑戰，公司必須調整策略，隨機應變，包括積極競投醫院新合約；要求社區店舖業主減租；發展自家品牌產品及改善 POS 銷售系統以增強公司營運效率等，讓公司可持續發展。在此感謝同事們勇於面對市場的無常，積極求變。最後，感謝董事會的指導和不懈支持。

行政總裁報告 CEO Report



The epidemic was finally declined after its three years' ravaging the world. All walks of life were looking forward to the comprehensive recovery of social and economical activities. The business sectors were also anticipating a return of economic momentum similar to the period before the epidemic and social activities. However, the results seemed not matching the anticipation. Emigration, online shopping, consumption behaviour shifting to Mainland and the change of tourists' consumption pattern had seriously hampered the restoration, especially in catering and retail industries. This led to a new wave of business closure. Pursuant to the unpredictability of the market trend and the rental concession of Hospital Authority and HKSAR to be terminated in December 2023, this casted an obvious burden to the operational cost and also affected the pace of business development in the community.

Core Mission Implementation

As of March 2024, "MentalCare Connect" operated 35 social enterprise projects and employed a total of 220 staff. Among them, 157 were disadvantaged groups of people (144 were disabled). This accounted for 71% of the workplace. 259 cases were referred to our Company and shops for placement by different organisations. The collaboration of 7-Eleven x Mindset x MentalCare Connect recorded a positive impact. With reference to the interim report, the social workers' support showed a significant elevation in different areas, particularly in the relief of tense emotion, emotion distress, increase the working competitiveness and enhancement of working stability.

Financial Performance

In Year 2023 to 2024, the total revenue of "MentalCare Connect" was HK\$188,099,569, showing a growth of 9.9% year-to-year. "Enhancing Employment of People with Disabilities through Small Enterprise Project" and "Enhancing Self-Reliance through District Partnership Programme" funded a total of HK\$1,972,376 as the start-up fund for different social enterprise projects. This translated as an approximate of 1.05% of the income. Due to the gradual relief of "Emergency Response Level" in public hospitals, the footfall of the Hospital was evidently increase. This should bring a considerable business to our shops. Unfortunately, the Government and the Hospital Authority abolished the rental concession scheme and one-off staff salary subsidy in December 2023 brought the reduction of profit by more than 50% for Year 2023-2024.



Business Development

■ Rehab Shop/Convenience Store Business

Following the relief of "Emergency Response Level" in public hospitals, along with the extension of visiting hours and resumption of non-emergency medical services, the Hospital footfall was significantly increase. This further enhanced our business revenue. The recovery of business of Hospital shop will inevitably bring negative impact to our shops in the community. During the period, "MentalCare Connect" successfully secured the retail operation in several re-tendering exercise with overcoming numerous hurdles. This included Convenience Store and Rehab Shop in Tuen Mun Hospital, Caritas Medical Centre, Pamela Youde Nethersole Eastern Hospital and Princess Margaret Hospital. On the other hand, "Cheers Gallery" at Causeway Bay was closed to the below-par business performance.

■ Coop Shop Business/Cheers Coop

The business of HA Coop shop still faced tough challenge in business after the epidemic. Its turnover was far lower than the period before the epidemic and social movement. "Cheers Coop" situated at Immigration Tower was retrieved by the Government for its purpose after the 3-year operation. "Cheers Coop" located at Hennessy Road was closed due to poor business performance. Fortunately, the Company secured the retail operations at the Departure Waiting Hall of Hong Kong Macau Ferry Terminal through "Socially Caring Leasing Arrangements" and the shop opened in September 2023. A number of vacancy was created for the unemployed staff.

■ 7-Eleven x Mindset x MentalCare

7-Eleven at Tseung Kwan O Hospital has been operating for more than one year and witnessed the success of tripartite cooperation in supporting the people in recovery for sustaining employment. The business performance was satisfactory as well. There was consensus among the parties to open one to two 7-Eleven and hiring more people in recovery.

Future

Despite of the economic turmoil and difficult marketing situation in the territory, the Company can still perform satisfactorily in the market. This was much due to the effort of our staff in different tiers and loyal customers. In the difficult year of 2023-2024, the Company could still record profit. Looking forward to Years 2024-2025, tough challenges are still lied ahead for retail and catering businesses. MentalCare Connect is needed to adjust its business strategies and make corresponding adjustment. This includes bidding for new project in hospitals, request for rental reduction for shops in the community, develop our own brand and improve POS system to boost up the operational efficiency etc. All these facilitate the Company's sustainable development in future. I thank my colleagues for their courage in facing the market challenges and make proactive changes. Last but not least, I am greatly indebted to the Board of Directors for their guidance and unfailing support.

願景、使命與核心價值 Vision, Mission & Core Values

願景 →

每一個人都應該擁有平等且具尊嚴的就業機會。

Vision →

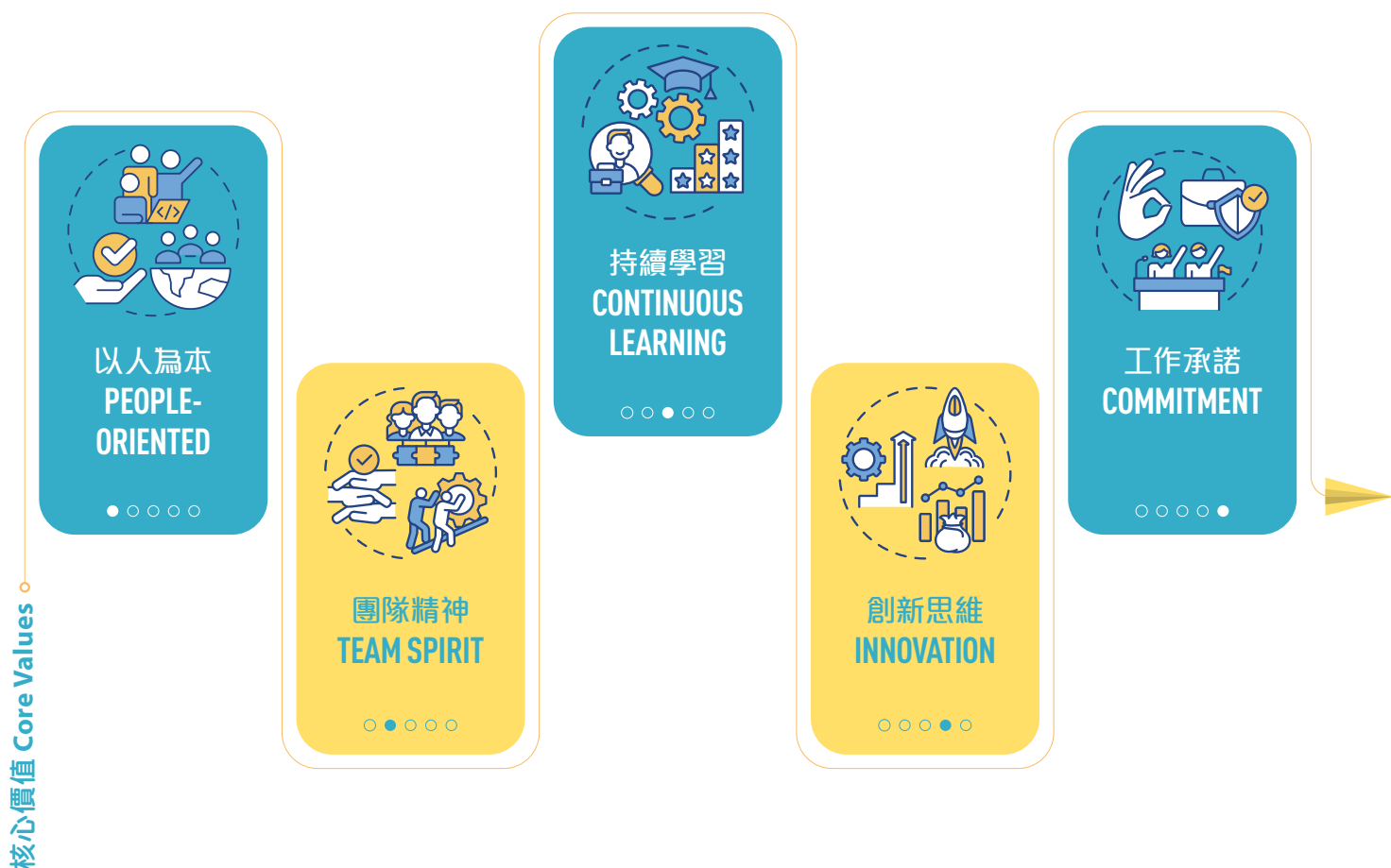
- Everyone should have an equal and dignified employment opportunity.

使命 →

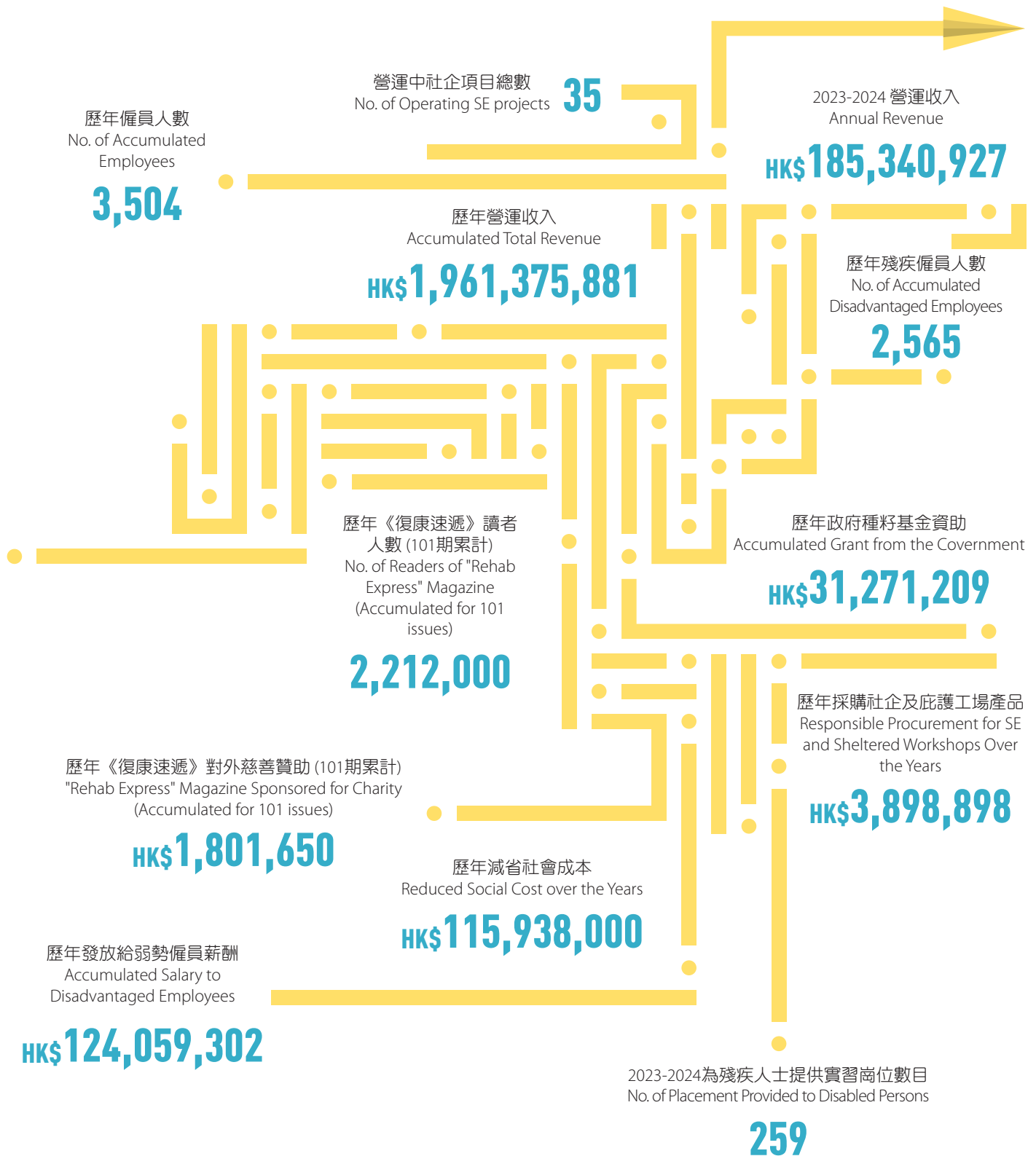
- 以社會企業模式為殘疾人士及弱勢社群創造具尊嚴的就業機會，並且促進工作間的精神健康；
- 推動社會企業的可持續發展和推廣「幫襯社企」運動。

Mission →

- To create employment opportunities with dignity for the disabled and disadvantaged people through social enterprise model and further promote the mental health in workplace.
- To enable the self-sustainability of social enterprises and promote “Buy Social” Movement.



社會效益亮點 2002-2024 Social Impact Highlights 2002-2024



組織架構 Organisational Chart



香港心理衛生會執行委員會
Executive Committee of The Mental Health Association of Hong Kong



明途聯繫有限公司董事會
Board of Directors of MentalCare Connect Co. Ltd.



董事會主席：黎守信醫生
Chairman : Dr. Benjamin Lai



董事：盧德臨醫生
Director : Dr. Lo Tak Lam



董事：梁士雄先生
Director : Mr. Carlos Leung



董事：潘佩瑤醫生
Director : Dr. Pan Pey Chyou



董事：林美玲醫生
Director : Dr. May Lam



董事：高淑蘭博士
Director : Dr. Flora Ko



公司義務秘書：鍾偉成先生
Hon. Secretary :
Mr. Chung Wai Shing



列席：香港心理衛生會總幹事
程志剛先生
In attendance : Mr. Ching Chi Kong
(Director of MHAHK)

明途聯繫有限公司
MentalCare Connect Co. Ltd.

行政總裁：鍾偉成先生
Mr. Chung Wai Shing (Chief Executive Officer)

零售營銷
Retail Marketing

企業營銷
Corporate Marketing

財務及
人力資源部
Finance & Human
Resources Department

資訊科技部
Information & Technology
Department

行政及質管部
Administration & Quality
Assurance Department

零售業務
Retail Business

市場
推廣服務
Marketing and
Promotion Service

出版業務
Publications

電子商務
Electronic
Commerce

物流及
顧客服務
Logistic &
Customer Service

餐飲業務
Catering Service

清潔業務
Cleansing
Services

員工團隊 Staff Team

行政總裁 鍾偉成先生	Chief Executive Officer Mr. Chung Wai Shing		
助理總經理 金保華小姐 (業務發展) 黃秀花小姐 (財務及人力資源)	Assistant General Manger Ms. Winnie Kam (Business Development) Ms. Christine Wong (Finance and Human Resources)		
高級經理 黃子卓先生 (行政及質管)	Senior Manager Mr. Dobe Wong (Administration & Quality Assurance)		
營運監督 蔡柏朗先生 (零售營銷)	Operation Lead Mr. Andy Choi (Retail Marketing)		
業務經理 鄭家俊先生 葉敬宗先生	Business Manager Mr. Kevin Cheng Mr. Duncan Ip	王國榮先生	Mr. Dennis Wong
助理經理 梁巧欣小姐 關嘉穎小姐	Assistant Manager Ms. Ada Leung Ms. Wing Kwan	鄺嘉惠小姐 李詩敏小姐	Ms. Karen Kwong Ms. Mandy Lee
高級主任 / 主管 李君小姐 殷敏琪小姐 何燕琳小姐	Senior Officer / Supervisor Ms. Printemps Lee Ms. Dabie Yan Ms. Yen Ho	梁孟威先生 黃婉婷小姐 王家欣小姐	Mr. Barry Leung Ms. Peony Wong Ms. Wong Ka Yan



員工團隊 Staff Team



主任

梁嘉儀小姐
譚慧瑩小姐
梁惠貞小姐

Officer

Ms. Kathy Leung
Ms. Yvonne Tam
Ms. Rabi Leung

唐佩斯小姐
陳婉琪小姐
蕭笑慧小姐

Ms. Teresa Tong
Ms. Suki Chan
Ms. Ada Siu

店務主任

盧靜寧小姐
李玉英小姐
倪鎮惠先生
何美蓮小姐
袁詩敏小姐
謝寶珍小姐
吳婉兒小姐
文玲君小姐
黎錦發先生
譚生先生
周秀娟小姐
馬敬恒先生
梁敏儀小姐
周良俊先生

Shop Supervisor

Ms. Loo Ching Ning
Ms. Lee Yuk Ying
Mr. Ngai Chun Wai
Ms. Ho Mei Lin
Ms. Yuen Sze Man
Ms. Tse Po Chun
Ms. Ng Yuen Yee
Ms. Man Ling Kwan
Mr. Lai Kam Fat
Mr. Tam Sang
Ms. Chow Sau Kuen
Mr. Ma King Hang
Ms. Leung Man Yi Sandy
Mr. Chow Leung Chuen

潘志偉先生
紀式雄先生
劉景浩先生
黃桂萍小姐
陳思敏小姐
馮成滔先生
李偉光先生
劉家傑先生
關景雲先生
黃少娟小姐
陳智明先生
吳紹琴小姐
葉詠詩小姐

Mr. Pan Chi Wai
Mr. Kei Sik Hung
Mr. Lau King Ho
Ms. Wong Kwai Ping
Ms. Chan Sze Man
Mr. Fung Shing To
Mr. Li Wai Kwong
Mr. Lau Kar Kit
Mr. Kwan King Wan
Ms. Wong Siu Kuen
Mr. Chan Chi Ming
Ms. Ng Siu Kam
Ms. Yip Wing Sze

業務發展 Business Development

新店開業 - 「卓思廊」廣華醫院復康店

店舖於 2023 年 5 月 15 日投入營運，並在同年 9 月舉行開幕典禮，感謝社署署長李佩詩女士、廣華醫院行政總監鄧錦成醫生、平等機會委員會主席朱敏健先生、油尖旺區議會主席林健文先生及立法會狄志遠議員蒞臨擔任主禮嘉賓。開幕儀式後，李佩詩署長聯同主禮嘉賓探訪「卓思廊」復康生活幹線（窩打老道），了解員工的工作情況。



業務發展 Business Development



New Store Opening – "Cheers Gallery" Kwong Wah Hospital Rehab Shop

The shop opened on 15th May 2023 and an Opening Ceremony was held in September the same year. Heartfelt thanks were given to Ms. Lee Pui Sze, Director of Social Welfare Department, Dr. Tang Kam Shing, Hospital Chief Executive of Kwong Wah Hospital, Mr. Ricky Chu Man-kin, Chairperson of Equal Opportunities Commission, Mr. Lam Kin Man, Chairman of Yau Tsim Mong District Council and Dr. Hon Tik Chi Yuen, Legislative Council Member as the officiating guests of the ceremony. After the Opening Ceremony, Ms. Lee Pui Sze and other Officiating Guests visited "Cheers Gallery" Rehab Links (Waterloo Road) to understand more about the working condition of shop staff.

「卓思廊」復康生活幹線（窩打老道）擴充營業

店舖於6月租用鄰鋪擴充營業，搖身變成單邊舖，坐落於窩打老道及登打士街交界，增加售賣復康輔具及傢俬等產品，讓顧客有更多更好的購物體驗。

Expansion of business of "Cheers Gallery" Rehab Links at Waterloo Road

The shop expanded its floor area through renting the adjacent shop in June. This created an eye catching one-sided shop front, locating strategically at the junction of Waterloo Road and Dundas Street. This enhanced the product mix of rehab products and furniture and created a better shopping experience to our customers.





新店開業 – 透過產業署的「社會關愛租務」安排，「樂協」便利店（上環港澳碼頭）於2023年9月12日投入營運。

New Store Opening – Through the Government Property Agency's "Socially Caring Leasing Arrangements", "Cheers Coop Plus" Convenience Store (HK Macau Ferry Terminal) opened on 12th September 2023.



「卓思廊」員工新制服添活力

New uniforms for "Cheers Gallery" staff brings vitality

店長制服
Shop Supervisor's uniform



店員制服
Shop Keeper's uniform



業務版圖 Business Presence



即張開業

「卓思廊」北大嶼山醫院復康店 | 便利店
"Cheers Gallery" North Lantau Hospital Rehab Shop | Convenience Store



「卓思廊」將軍澳醫院復康用品專賣店
"Cheers Gallery" Tseung Kwan O Hospital Rehab Shop



「卓思廊」東區醫院復康用品專賣店
"Cheers Gallery" Eastern Hospital Rehab Shop



卓思廊，屯門醫院復康用品專賣店
"Cheers Gallery" Tuen Mun Hospital Rehab Shop



「卓思廊」瑪嘉烈醫院復康生活幹線
"Cheers Gallery" Princess Margaret Hospital Rehab Links



「卓思廊」明愛醫院復康生活幹線
"Cheers Gallery" Caritas Medical Centre Rehab Links



「卓思廊」廣華醫院復康店
"Cheers Gallery" Kwong Wah Hospital Rehab Shop



「卓思廊」復康用品專賣店 (南京街)
"Cheers Gallery" Rehab Shop (Nanking Street)



「卓思廊」復康生活幹線 (協和街)
"Cheers Gallery" Rehab Links (Hip Wo Street)



「卓思廊」復康生活幹線 (高打老道)
"Cheers Gallery" Rehab Links (Waterloo Road)



「卓思廊」復康生活幹線 (街市街)
"Cheers Gallery" Rehab Links (Market Street)



價值共創 Co-creation of Value



「明途聯繫」與「利民會」獲得「最佳社企合作」獎項

與「利民會」的物流合作

「明途聯繫」在過去一年，為「利民會」的精神復元人士提供訓練和實習機會。讓該會接受職業復康服務的運輸組學員，恆常地為港澳碼頭「樂協」便利店提供物流服務，同時補充了公司在港島區物流支援不足的缺口。

Logistics cooperation with the Richmond Fellowship of Hong Kong

In the past year, "MentalCare Connect" provided training and internship opportunities for people with mental recovery for the Richmond Fellowship of Hong Kong. It let the trainees from the transportation team who receive Vocational Rehabilitation Service of The Association to regularly provide logistics services to the "Cheers Coop" at the Hong Kong-Macau Ferry Terminal, and at the same time it replenished the Company's insufficient logistics support in Hong Kong Island.

「在實際的工作場景，提升了學員的工作技能、人際溝通技巧和改善個人自我管理效能，增加他們獲得公開就業的機會，進一步融入社區。」～「利民會」

"In the actual working scenarios, trainees' work skills, interpersonal communication skills and personal self-management effectiveness were improved. This enhanced their opportunities to be employed and further facilitate to re-integrate into the community." ~ **Richmond Fellowship of Hong Kong**

企業成就及嘉許 Corporate Achievements and Recognitions



520「友里」照顧你微博覽

照顧者易達平台於 2023 年 5 月 20 日在沙田科學園中庭長廊舉行「520『友里』照顧您微博覽」，「明途聯繫」受邀出席及獲頒嘉許狀，以答謝旗下「樂協社團優惠坊」一直以來對照顧者易達平台的支持。

520 Care-hood Micro Expo

CAREEREPS organised "520 Care-hood Micro Expo" at Hong Kong Science Park on 20th May 2023. "MentalCare Connect" was invited and awarded with the Appreciation Certificate to express the gratitude from Cheers Co-op's unfailing support.



「香港心理衛生會」訓練及就業服務中心（新界） 2023 - 2024 年度周年晚宴

「明途聯繫」獲邀出席「香港心理衛生會」訓練及就業服務中心（新界）2023 - 2024 年度周年晚宴。營運監督蔡柏朗先生代表公司出席，並獲頒予獎狀以表揚「明途聯繫」為殘疾人士公開就業作出貢獻。

2023-2024 Annual Dinner of "The Mental Health Association of Hong Kong Training and Employment Service Centre (New Territories)"

"MentalCare Connect" was invited to attend the 2023-2024 Annual Dinner of "The Mental Health Association of Hong Kong Training and Employment Service Centre (New Territories)" and was awarded a certificate for appreciating its effort in creating job opportunities for disabled persons and promoting social integration. Mr. Andy Choi, Operation Lead, represented the Company and received the award.



觀塘區關愛僱主表揚計劃 2023

「觀塘區關愛僱主表揚計劃 2023」於 2024 年 2 月 25 日假牛頭角上村廣場舉行。「明途聯繫」獲頒發獎狀，以表揚公司在傷健共融範疇所作出的努力。行政部譚慧瑩小姐代表公司出席及接受獎項。

Caring Employer Award, Kwun Tong District 2023

"International Day of Persons with Disabilities – Caring Employer Award, Kwun Tong 2023" was held on 25th February 2024 at the piazza of Upper Ngau Tau Kok Estate. "MentalCare Connect" acclaimed for the leading roles in employing disabled people. Ms. Yvonne Tam, Officer (Administration and Quality Assurance) of "MentalCare Connect", represented the Company and received the award.

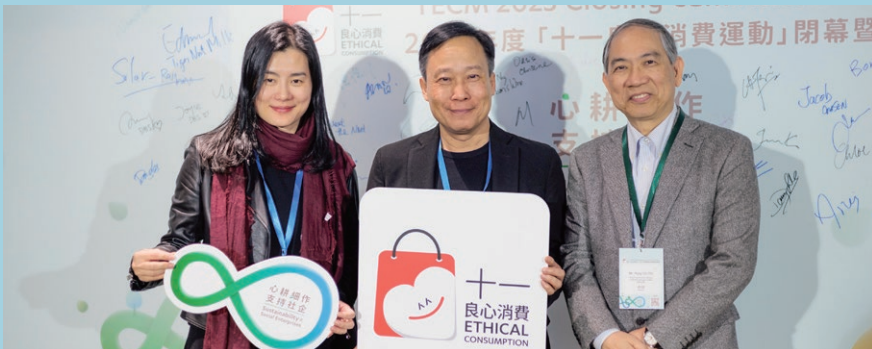


「利民會」2023 – 2024 年度周年晚宴

「明途聯繫」獲邀出席「利民會」2023 – 2024 年度周年晚宴，並被頒予獎座以表彰「明途聯繫」作為合作夥伴與「利民會」在 2023-2024 年度中建立的良好合作關係。公司資訊科技及物流部經理王國榮先生代表領獎。

2023-2024 Annual Dinner of "The Richmond Fellowship of Hong Kong"

"MentalCare Connect" was invited to attend the 2023-2024 Annual Dinner of "The Richmond Fellowship of Hong Kong" and was honoured to receive an award as a token of recognition for the strong partnership forged between "MentalCare Connect" and the host. Mr. Dennis Wong, Manager (IT & Logistics), represented the Company to receive the Award.



2023 年度社企嘉許計劃

「十一良心消費運動」閉幕暨嘉許典禮於 2024 年 3 月 11 日假香港康得思酒店舉行，近二百名嘉賓、商界專業人士、社企及社福機構代表一同出席見證盛事。「明途聯繫」獲邀出席及獲頒「最佳社企合作大獎」，由行政總裁鍾偉成先生及助理總經理金保華小姐代表出席領獎。



Social Enterprise Award Scheme 2023

The "Social Enterprise Award Scheme 2023" was held on 11th March 2024 at Cordis Hong Kong. Nearly 200 guests, business professionals, representatives of social enterprises and social welfare organizations attended the event. Mr. Chung Wai Shing, CEO and Ms. Winnie Kam, Assistant General Manager (Business Development) of "MentalCare Connect", represented the Company and received the Award.

業界交流及培訓 Sector's Sharing and Training



聖公會星願居探訪「明途聯繫」

聖公會澳門社會服務處—聖公會星願居代表團於 2023 年 5 月 16 日探訪公司，由行政總裁鍾偉成先生簡介公司業務概況，解說社會企業的營運模式，發展趨勢及所帶來的社會效益。此次探訪更標誌著疫情後首個境外團體的交流探訪。



Astor Shore visited MentalCare Connect

Astor Shore, Macau visited "MentalCare Connect" on 16th May 2023. Mr. Chung Wai Shing, CEO of "MentalCare Connect" introduced the Company's business profile which enhanced the visitors with a better understanding on the operation and development of social enterprise as well as the benefits brought to the disabled persons and the society. The visit marked the first organization outside HK visiting "MentalCare Connect" after the epidemic.



北京師範大學及香港浸會大學聯合國際學院師生到訪

位於珠海的聯合國際學院陳錦棠教授聯同 15 位社工碩士班師生於 2023 年 7 月 11 日到訪，行政總裁鍾偉成先生分享怎樣由一位社工轉化成 社創家。



A visit from Beijing Normal University - Hong Kong Baptist University United International College

Dr. Chan Kam Tong, Programme Director of the Social Work & Social Administration (SWSA) of Beijing Normal University-Hong Kong Baptist University United International College (UIC) with 15 Master of Social Work students visited "MentalCare Connect" on 11th July 2023. Mr. Chung Wai Shing, CEO of "MentalCare Connect" shared with the guests about his transformation from a social worker to a SE entrepreneur.

拼政策、撐社企、搶商機社企政策座談會

香港社會企業總會於 2023 年 8 月 23 日舉辦是次座談會，匯報「2023 年新冠疫後社企業界營運狀況調查」所得結果，同時亦就本港社會企業的發展檢視政府相關政策或措施，「明途聯繫」行政總裁鍾偉成先生亦就此提出相關建議。

Social Enterprise Policy Symposium on fighting for policies, supporting social enterprises and seizing business opportunities

The Hong Kong General Chamber of Social Enterprises Ltd held the symposium on 23rd August, 2023, to report the results of the "Survey on the Operational Situation of the Social Enterprise Sector after the COVID-19 Epidemic in 2023". It also reviewed relevant government policies or measurements regarding the development of social enterprises in Hong Kong. In this regard, Mr. Chung Wai Shing, CEO of "Mentalcare Connect" provided relevant suggestions.



香港及新加坡 MINDSET「思健」慈善基金到訪及參觀「卓思廊」

新加坡 MINDSET 慈善基金於 2023 年 9 月 5 日來港與香港 MINDSET 及合作夥伴交流，其中包括 MINDSET x 7-ELEVEN x MENTALCARE 的合作計劃。席間分享精神復元人士如何透過就業促進精神健康，並且探訪公司轄下的協和街「卓思廊」，了解復康店的運作及精神復元店員的就業情況。

A visit by the Hong Kong and Singapore MINDSET Charity Foundation to Cheers Gallery

The Singapore MINDSET Charity Foundation visited Hong Kong and communicated with Hong Kong MINDSET and its partners, including the project of MINDSET x 7-ELEVEN x MENTALCARE on 5th September 2023. During the visit, the participants shared how the mental health of those people in recovery can be improved via work engagement. The visitors also visited "Cheers Gallery" at Hip Wo Street to have a more in-depth understanding about the rehab shop operations and the working conditions of the people in recovery.

業界交流及培訓 Sector's Sharing and Training



首爾社企考察團 2023

行政總裁鍾偉成先生及助理總經理金保華女士參加由香港社會企業總會舉辦的「首爾社企考察團 2023」，參觀當地的政府部門及多間社企，了解韓國的社企政策怎樣促進社企的可持續發展，而韓國政府對社企的支持值得香港借鏡。

Study visit on Social Enterprises in Seoul 2023

Mr. Chung Wai Shing, CEO and Ms. Winnie Kam, Assistant General Manager of "MentalCare Connect" joined the "Study Visit of Social Enterprises in Seoul 2023" organized by HKGCSE. The tour visited related Government Departments and a number of SEs in Seoul. This allowed the participants to understand more about the government policies in promoting the sustainable development of SEs. All these served as a role model to inspire Hong Kong Government to facilitate the growth of local SEs.



香港專業進修學校社工系實習

公司為 2 位港專社工學生提供實習機會，實習期由 2023 年 8 月至 12 月，讓同學認識社企運作及社企如何協助精神復元人士重投社會。

Internship of the Hong Kong College of Technology Social Work Students

The Company provided internship opportunities to two students major in social work of HKCT. The internship period was from August to December 2023, allowing students to understand the operation of social enterprises and how to help persons in mental recovery reintegrating into society.

香港專業進修學校社工系學生到訪

港專社工系學生於 2024 年 1 月 22 日到訪公司，由行政總裁鍾偉成先生分享香港的社會企業發展及社工如何轉化成為社會創業家，鼓勵同學們考慮投入社創家行列。

A visit from the students of Social Work of the Hong Kong School of Vocational and Continuing Education

Students of Social Work of HKCT visited the Company on 22nd January, 2024. Mr. Chung Wai Shing, CEO shared the development of social enterprises in Hong Kong and how social workers can be transformed into social entrepreneurs, and encouraged students to consider joining the ranks of social entrepreneurs.



員工參與及成就 Employee Participation & Achievement



第 38 屆上海國際醫療器械展覽會 2023

行政總裁鍾偉成先生與復康用品零售及市場推廣部門同事聯同母會物理治療師參觀於上海世博展覽館舉行的第三十八屆上海國際醫療器械展覽會，拓展合作機會。



The 38th Shanghai International Medical Devices Exhibition 2023

Mr. Chung Wai Shing, CEO led the colleagues of Retail Marketing, along with the physiotherapist of MHAHK, visited the 38th Shanghai International Medical Device Exhibition held at Shanghai World Expo Exhibition Center. The objective was to seek the opportunities of cooperation with the Exhibition participants.



香港社企員工嘉許計劃 2023

「香港社企員工嘉許計劃 2023」於 2023 年 12 月 7 日假尖沙咀維港皇宴維港廳舉行。「明途聯繫」有 12 位員工獲頒傑出社企員工。

另外，「思健」與 7-Eleven 及「明途聯繫」合作經營第一間「友善特營」便利店的店務員馮丹蕾於是次嘉許計劃中獲頒發「最具合作精神獎」以嘉許及表揚她在工作上的優異表現和合作精神。



Hong Kong Social Enterprise Employee Recognition Scheme 2023

"Hong Kong Social Enterprises Employee Recognition Scheme 2023" was held at "ClubONE - The Victoria", Tsim Sha Tsui on 7th December 2023. Twelve staff of "MentalCare Connect" were awarded Outstanding Employee.

Ms. Fung Tan Lui working in the first "Friendchised" convenience store jointly cooperated by "MINDSET" x 7-ELEVEN x "MentalCare Connect" and was awarded the "Best Team Spirit Award". This is the accolade recognizing her outstanding performance and cooperativeness at work.



總辦事處聖誕聯歡會 2023

「明途聯繫」於 2023 年 12 月 22 日在總辦事處舉行聖誕聯歡會，讓同事共渡佳節之餘亦藉此放鬆抒壓。



Head Office's Christmas Party 2023

"MentalCare Connect" held a Christmas party at the Head Office on 22nd December, 2023 to let colleagues to celebrate the festival together and take the opportunity to relax and relieve stress.



醫院管理局傳媒晚宴

醫院管理局傳媒晚宴「好久不見 Long Time No See」於 2024 年 1 月 26 日舉行，醫管局主席范鴻齡先生、行政總裁高拔陞醫生及其他醫管局代表與傳媒朋友相聚同樂、互相交流。《復康速遞》雜誌獲邀，由雜誌總編輯李君小姐代表出席。



Hospital Authority Media Dinner

The Hospital Authority Media Dinner titled "Long Time No See" was held on 26th January 2024. Mr. Henry Fan Hung Ling, Chairman of the Hospital Authority and Dr. Tony Ko Pat-sing, CEO of Hospital Authority, accompanied with the representatives of the Hospital Authority and media peers gathered and shared with each other. Ms. Printemps Lee, Chief Editor of "Rehab Express" Magazine was invited to attend the event.

員工參與及成就 Employee Participation & Achievement



「明途聯繫」2023 年度周年晚宴

晚宴在 2024 年 3 月 10 日舉行。董事會主席黎守信醫生及行政總裁鍾偉成先生先後致詞答謝員工在過去一年的努力，於逆境中仍緊守崗位，創造可喜的業績。當晚除了遊戲及抽獎外，同場亦頒發 5 年和 10 年忠誠服務獎和店鋪傑出表現獎，以表揚店鋪員工優秀的工作成績。

"MentalCare Connect" Annual Dinner 2023

The Annual Dinner was held on 10th March 2024. Dr. Benjamin Lai, Chairman of Board of Directors and Mr. Chung Wai Shing, CEO addressed their gratitude to the staff's endeavour in creating a joyful business result with remaining steadfast in duties. Games and lucky draws were held for creating the pleasant atmosphere. 5-year, 10-year Long Service Awards and Outstanding Performance Awards for shops were also presented in the event. All these acknowledged the excellent working performance of the staff.



財務回報 2023-2024 Financial Return 2023-2024

2023-2024 年度總收入 Annual Revenue

: HK\$188,099,569

包括 Includes:

▪ 種籽基金 Seed Money

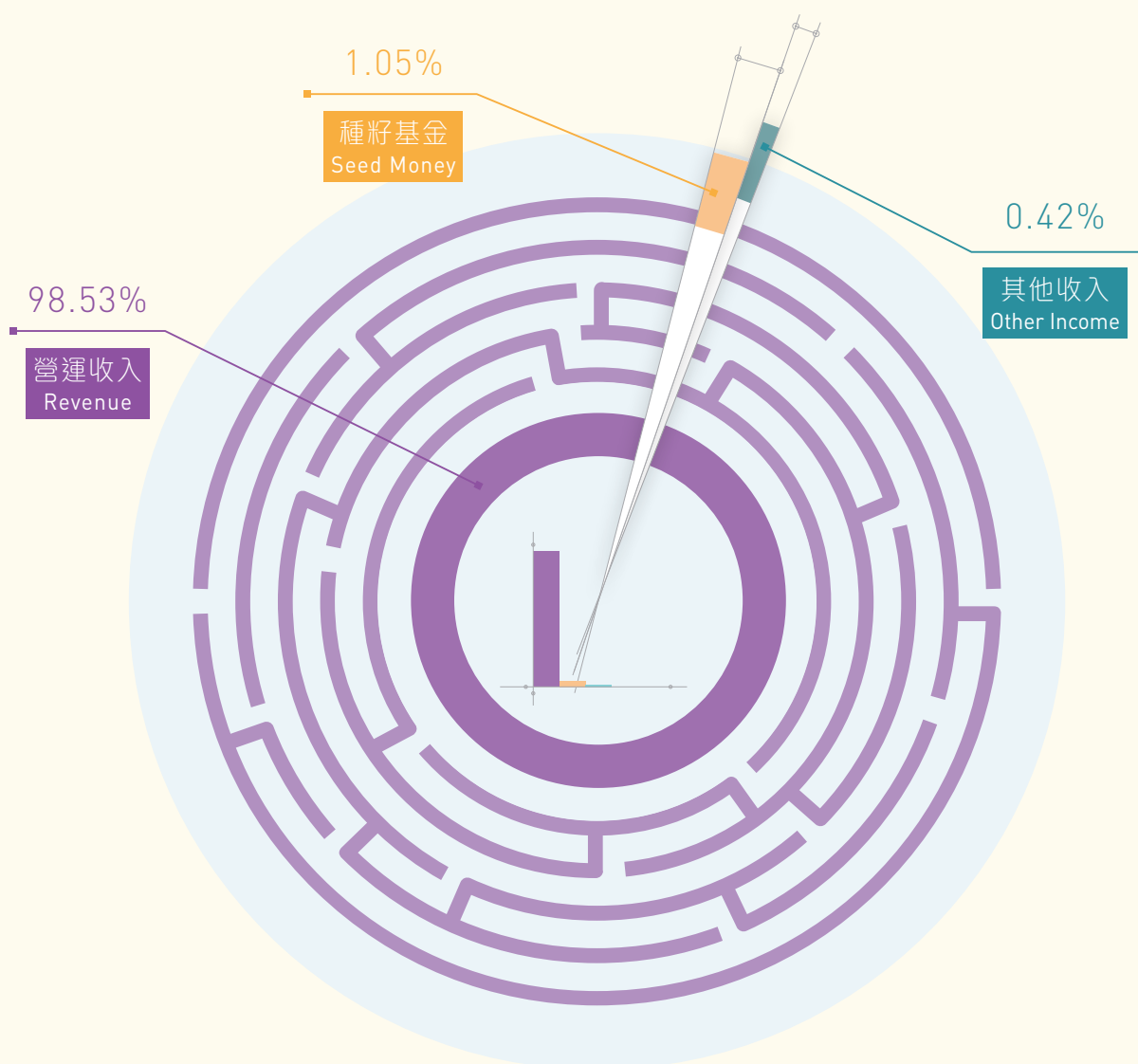
: HK\$1,972,376

▪ 營運收入 Revenue

: HK\$185,340,927

▪ 其他收入 Other Income

: HK\$786,266



核數報告 2023-2024

Audit Report 2023-2024

MENTALCARE CONNECT COMPANY LIMITED
明途聯繫有限公司
STATEMENT OF FINANCIAL POSITION
AS AT 31 MARCH 2024

	NOTE	2024 HK\$	2023 HK\$
NON-CURRENT ASSETS			
Plant and equipment	4	2,954,848	3,309,872
Available-for-sale financial assets	5	4,034,678	4,063,569
		<u>6,989,526</u>	<u>7,373,441</u>
CURRENT ASSETS			
Inventories	6	11,039,914	10,284,542
Deposits		1,039,445	633,615
Payment in advance		2,526,433	126,773
Trade and other receivables		582,174	2,793,831
Cash and bank balances		19,319,267	16,277,802
Current tax refundable	8	0	323,942
		<u>34,507,233</u>	<u>30,440,505</u>
CURRENT LIABILITIES			
Accrued expenses		2,260,901	2,747,028
Trade and other payables		16,119,746	13,847,335
Received in advance		2,011,066	1,150,627
Current tax payable	8	90,404	0
Deferred income	7	574,857	695,233
		<u>21,056,974</u>	<u>18,440,223</u>
NET CURRENT ASSETS		<u>13,450,259</u>	<u>12,000,282</u>
TOTAL ASSETS LESS CURRENT LIABILITIES		<u>20,439,785</u>	<u>19,373,723</u>
NON-CURRENT LIABILITIES			
Deferred income	7	(461,648)	(830,694)
NET ASSETS		<u>19,978,137</u>	<u>18,542,829</u>
Represented by:			
Share capital	9	3,000,000	3,000,000
SWD funds		161,986	161,986
Accumulated other comprehensive income		(965,322)	(936,431)
Retained profits		<u>17,781,473</u>	<u>16,317,274</u>
TOTAL FUND AND RESERVES		<u>19,978,137</u>	<u>18,542,829</u>

The accompanying accounting policies and explanatory notes form an integral part of, and should be read in conjunction with, these financial statements.

These financial statements were approved and authorised for issue by the Company's Board of Directors on 08 OCT 2024

Lai Benjamin
Director

Pan Pey Chydu
Director

Page 6

MENTALCARE CONNECT COMPANY LIMITED
明途聯繫有限公司
STATEMENT OF COMPREHENSIVE INCOME
FOR THE YEAR ENDED 31 MARCH 2024

	NOTE	2024 HK\$	2023 HK\$
INCOME			
Grant income	7	1,972,376	2,549,649
Sales income	10	185,340,927	165,043,638
Grant from Employment Support Scheme under the Anti-epidemic Fund		0	2,911,200
Sundry income		786,266	699,419
Total Income	11	<u>188,089,569</u>	<u>171,203,906</u>
EXPENDITURE			
Cost of sales	12	135,720,816	120,761,828
Staff Cost		28,991,118	27,923,665
- Salaries, wages and allowances		1,263,558	1,226,903
- Contribution to MPF		1,737,673	1,595,029
Depreciation on plant and equipment	4	1,112,046	990,262
Management fee to immediate parent and ultimate controlling party	14	17,709,237	15,646,837
Other operating expenses			
Total Expenditure		<u>186,534,448</u>	<u>168,144,524</u>
PROFIT BEFORE TAXATION	11	<u>1,565,121</u>	<u>3,059,382</u>
TAX EXPENSES	13	<u>100,922</u>	<u>4,518</u>
PROFIT FOR THE YEAR		<u>1,464,199</u>	<u>3,054,864</u>
OTHER COMPREHENSIVE EXPENSE			
Available-for-sale financial assets			
- Fair value changes during the year		(28,891)	(522,702)
OTHER COMPREHENSIVE EXPENSE FOR THE YEAR		<u>(28,891)</u>	<u>(522,702)</u>
TOTAL COMPREHENSIVE INCOME FOR THE YEAR		<u>1,435,308</u>	<u>2,532,162</u>

The accompanying accounting policies and explanatory notes form an integral part of, and should be read in conjunction with, these financial statements.

Page 7

鳴謝

Acknowledgements

義務法律顧問	Honorary Legal Advisor
周靜嫻律師	Ms. Loretta C. H. Chow
許宗盛太平紳士	Mr. Herman Hui, JP
義務商業顧問	Honorary Business Advisor
莫華勳先生	Mr. Peter Mok
政府部門	Government Bureaux & Departments
社會福利署康復服務市場顧問辦事處	Marketing Consultancy Office (Rehabilitation), Social Welfare Department
社會福利署	Social Welfare Department
民政及青年事務局	Home and Youth Affairs Bureau
勞工及福利局	Labour & Welfare Bureau
醫務衛生局	Health Bureau
政府產業署	Government Property Agency
商業夥伴	Business Partners
醫院管理局	Hospital Authority
北區醫院	North District Hospital
博愛醫院	Pok Oi Hospital
律敦治醫院	Ruttonjee Hospital
將軍澳醫院	Tseung Kwan O Hospital
屯門醫院	Tuen Mun Hospital
瑪嘉烈醫院	Princess Margaret Hospital
明愛醫院	Caritas Medical Centre
大埔醫院	Tai Po Hospital
廣華醫院	Kwong Wah Hospital
威爾斯親王醫院	Prince of Wales Hospital
東區尤德夫人那打素醫院	Pamela Youde Nethersole Eastern Hospital
北大嶼山醫院	North Lantau Hospital
雅麗氏何妙齡那打素	Alice Ho Miu Ling Nethersole Hospital
沙田醫院	Shatin Hospital
葛量洪醫院	Grantham Hospital
教育局九龍塘教育服務中心	Education Bureau Kowloon Tong Education Services Centre
香港教育大學	The Education University of Hong Kong
義務工作發展局	Agency for Volunteer Service
誠信綜合治療中心	Alliance Holistic Care Center
誠信醫療中心	Alliance Medical Center
ASANA 360	ASANA 360
太平洋科技有限公司	ASM Pacific Technology Asia Limited
政府製圖人員協會	Association of Government Cartographic Staff
政府工程技術及測量人員協會	Association of Government Technical and Survey Officers
親子王國	Baby Kingdom
浸信會愛群社會服務處	Baptist Oi Kwan Social Service
BCT 銀聯集團	BCT Bank Consortium Trust Company Limited
國農證券有限公司	China Demeter Financial Investments Limited
華人置業集團	Chinese Estates Holdings Limited
香港中華基督教青年會	Chinese YMCA of Hong Kong
基督教勵行會 - 培訓服務	Christian Action Training Services
俊和建築工程有限公司	Chun Wo Construction Holdings Company Limited
關護長者協會	Community CareAge Foundation Limited
建造業福利會	Construction Welfare Association
香港銅鑼灣皇冠假日酒店	Crowne Plaza Hong Kong Causeway Bay

星展銀行 (香港) 有限公司	DBS Bank (Hong Kong) Limited
帝盛酒店集團	Dorsett Hospitality International
易寶通訊服務有限公司	Epro Telecom Services Limited
豐盛社企學會有限公司	Fullness Social Enterprises Society Limited
港怡醫院	Gleneagles Hospital
恆益物業管理有限公司	Hang Yick Properties Management Limited
香港藝術中心	Hong Kong Arts Centre
香港失明人協進會	Hong Kong Blind Union
香港寬頻網絡有限公司	Hong Kong Broadband Network Limited
香港基督教服務處同工協會	Hong Kong Christian Service
香港海關關員職系協會	Hong Kong Customs and Excise Customs Officer Grade Association
香港職業發展服務處	Hong Kong Employment Development Service Limited
香港社會企業總會	Hong Kong General Chamber of Social Enterprises Limited
香港工程師學會	Hong Kong Institution of Engineers
香港社會工作者總工會	Hong Kong Social Workers' General Union
香港基督教女青年會	Hong Kong Young Women's Christian Association
康業服務有限公司	Hong Yip Service Company Limited
佳民集團	JIA Group Holdings Limited
川田集團有限公司	Kawada Holdings Company Limited
毅力醫護健康集團	Kinetics Medical & Health Group
畢馬威會計師事務所	KPMG
林德港氧有限公司	Linde HKO Limited
勞氏清潔服務有限公司	Lo's Cleaning Services Ltd.
時代醫療集團	Medtimes Medical Group
循道衛理中心	Methodist Centre
NEP Holdings International (HK) Ltd.	NEP Holdings International (HK) Ltd.
ONYX 酒店集團 (泰國為基地)	ONYX Hospitality Group (Shama Management Ltd.)
陳校長免費補習天地	Principal Chan Free Tutorial World Limited
羅兵咸永道會計師事務所	PwC HK
伊利沙伯醫院同儕會	Queen Elizabeth Hospital Alumni Association
長者安居協會	Senior Citizen Home Safety Association
信佳集團管理有限公司	Serco Group (HK) Limited
博藝體運有限公司	Spotlight Enterprises Limited
聖雅各福群會	St. James' Settlement
香港聖約翰救護機構	St. John Ambulance
聖保祿醫院	St. Paul's Hospital
得易健康有限公司	Take2 Health Limited
香港基督少年軍	The Boys' Brigade Hong Kong
香港退伍軍人聯會	The Hong Kong Ex-Servicemen's Association
香港賽馬會	The Hong Kong Jockey Club
香港人壽保險從業員協會	The Life Underwriters Association of Hong Kong
香港心理衛生會	The Mental Health Association of Hong Kong
香港大學傳訊及公共事務處	The University of Hong Kong Communications and Public Affairs Office
增力服務有限公司	Tsang Lik Services Ltd
仁安醫院	Union Hospital
政府學校教師協會	Union of Government School Teachers
幸福滿滿食品有限公司	Yammy One Good Food Ltd.
裕利醫藥有限公司	Zuellig Pharma Limited
Aesop Hong Kong Limited	Aesop Hong Kong Limited
香港龍崗親義總會有限公司	Lung Kong Association of Hong Kong Limited

《復康速遞》雜誌名譽顧問
(排名不分先後)

方玉輝醫生
社會醫學專科醫生

程志剛先生
香港心理衛生會總幹事

李俊傑醫生
養和醫院家庭醫學專科醫生

"Rehab Express" Magazine Honorary Advisors
(Names listed not in order)

Dr. Ben Fong
Specialist in Community Medicine

Mr. Ching Chi Kong
Director, The Mental Health Association of Hong Kong

Dr. Tony Lee
Specialist in Family Medicine, Hong Kong Sanatorium & Hospital

吳美君女士 名卓護綜合專科護理及顧問中心顧問護士	Ms. May Ng Nurse Consultant, Nu Pro Nurse Clinic Centre of Excellence
高永文醫生 前食物及衛生局局長	Dr. Ko Wing Man Former Secretary for Food and Health Bureau
高淑蘭博士 香港理工大學專業進修學院持續教育處持續教育課程顧問(康復治療科學)	Dr. Flora Ko Continuing Education Advisor (Rehabilitation Sciences), Continuing Education Office, SPEED, HKPC
孫外主教授 香港中文大學中醫學院專業顧問	Prof. Sun Waizhu Professional Consultant, School of Chinese Medicine, The Chinese University of Hong Kong
莫恩榮醫生 九龍醫院胸肺內科部門主管	Dr. Thomas Mok Chief of Service, Respiratory Medical Department, Kowloon Hospital
莫華勳先生 大澳文化基金會有限公司董事	Mr. Peter Mok Director, Tai O Heritage Foundation Limited
許偉智先生 葵涌醫院高級物理治療師	Mr. Simon Hui Senior Physiotherapist, Kwai Chung Hospital
麥基恩醫生 資深精神科醫生	Dr. Mak Ki Yan Specialist in Psychiatry
楊慧珍女士 高級營養師	Ms. Emily Yeung Senior Dietician
葉維國醫生 香港中文大學內科及藥物治療學系心臟專科醫生	Dr. Gabriel Yip Specialist in Cardiology, Dept. of Medicine & Therapeutics, The Chinese University of Hong Kong
黎守信醫生 資深精神科醫生	Dr. Benjamin Lai Specialist in Psychiatry
潘佩珍醫生 資深精神科醫生	Dr. Pan Pey Chyou Specialist in Psychiatry
詹華強教授 香港科技大學中藥研發中心主任	Dr. Karl Tsim Director, Division of Life Science, Center for Chinese Medicine R&D, The Hong Kong University of Science & Technology
劉業添醫生 內分泌及糖尿病專科醫生	Dr. Lau Ip Tim Specialist, Diabetes and Metabolism
盧德臨醫生 資深精神科醫生	Dr. Lo Tak Lam Specialist in Psychiatry
龐曹聖玉女士 香港護理及衛生管理學院院長	Ms. Alice Tso President, The Hong Kong College of Nursing and Health Care Management
鄺國柱醫生 呼吸系統科專科醫生	Dr. Kwong Kwok Chu Specialist, Respiratory Medicine
羅英敏先生 香港輪椅輔助隊執行委員	Mr. Angus Law Committee Member, Executive Committee Board, Hong Kong Wheelchair Aid Service Ltd.
《復康速遞》雜誌封面故事人物 (排名不分先後)	"Rehab Express" Magazine Cover People (Names listed not in order)
黃光耀先生 會德豐地產副主席兼常務董事	Mr. Ricky Wong Vice Chairman & Managing Director of Wheelock Properties
姜麗文小姐 藝人	Ms. Lesley Chiang Artist
歐瑞強先生 歌手	Mr. Albert Au Singer
阮家興醫生 葵涌醫院行政總監	Dr. Nguyen Gia Hung Hospital Chief Executive of Kwai Chung Hospital
王苑之小姐 藝人	Ms. Ivana Wong Artist
林嘉華先生 藝人	Mr. Dominic Lam Artist
《復康速遞》雜誌作者 (排名不分先後)	"Rehab Express" Magazine Authors (Names listed not in order)
醫院管理局	Hospital Authority
香港防癌會	The Hong Kong Anti-Cancer Society
聖雅各福群會 社區營養服務及教育中心	St. James' Settlement Community Nutrition Services & Education Center
香港心理衛生會社區教育部	Division of Community Education, The Mental Health, Association of Hong Kong
基督教聯合那打素社康服務	United Christian Nethersole Community Health Service
香港藥學服務基金	Pharmaceutical Care Foundation
屯門地區康健中心	Tuen Mun District Health Centre
梁凱怡小姐 香港心理衛生會教育主任	Ms. Christy Leung Social Worker, The Mental Health Association of Hong Kong
黃麗詩醫生 內分泌科專科醫生	Dr. Wong Lai Sze Specialists in Endocrinology

羅兆愉小姐 英國註冊音樂治療師	Ms. Fanny Lo Registered Music Therapist
廖家康先生 香港藥學服務基金到訪藥劑師	Mr. Liu Ka Hong Visiting Pharmacists, Hong Kong Pharmaceutical Care Foundation
劉志豪先生 註冊職業治療師 (香港)	Mr. Lau Chi Ho Registered Occupational Therapist (Hong Kong)
黃宗顯醫生 精神科專科醫生	Dr. Wong Chung Hin Specialist in Psychiatry
黃麗詩醫生 內分泌科專科醫生	Dr. Wong Lai Sze Specialists in Endocrinology
羅兆愉小姐 英國註冊音樂治療師	Ms. Fanny Lo Registered Music Therapist
廖家康先生 香港藥學服務基金到訪藥劑師	Mr. Liu Ka Hong Visiting Pharmacists, Hong Kong Pharmaceutical Care Foundation
劉志豪先生 註冊職業治療師 (香港)	Mr. Lau Chi Ho Registered Occupational Therapist (Hong Kong)
黃宗顯醫生 精神科專科醫生	Dr. Wong Chung Hin Specialist in Psychiatry
張浪醫師 基督教聯合那打素社康服務註冊中醫師	Dr. Zhang Lang Registered Chinese Medicine Practitioners, United Christian Nethersole Community Health Service
劉達康中醫師 香港防癆會 - 香港大學中醫診所暨教研中心 (南區)	Dr. Lau Tat Hong The Hong Kong Tuberculosis Association - The University of Hong Kong Chinese Medicine Clinic cum Training and Research Centre (Southern District)
鄭漪筠醫師 香港防癆會 - 香港大學中醫診所暨教研中心 (南區)	Dr. Cheng Yee Kwan The Hong Kong Tuberculosis Association - The University of Hong Kong Chinese Medicine Clinic cum Training and Research Centre (Southern District)
陳敏瑩醫師 香港防癆會 - 香港大學中醫診所暨教研中心 (南區)	Dr. Chan Man Ying The Hong Kong Tuberculosis Association - The University of Hong Kong Chinese Medicine Clinic cum Training and Research Centre (Southern District)
彭綺婷醫師 香港防癆會 - 香港大學中醫診所暨教研中心 (南區)	Dr. Pang Yee Ting The Hong Kong Tuberculosis Association - The University of Hong Kong Chinese Medicine Clinic cum Training and Research Centre (Southern District)
文穎鋒先生 賽馬會流金匯一級物理治療師	Mr. Man Wing Fung Physiotherapist I, Jockey Club Cadenza Hub
葉韻姿醫師 基督教聯合那打素社康服務賽馬會天水圍社區健康中心註冊中醫師	Dr. Yip Wan Chi Registered Chinese Medicine Practitioner, Jockey Club Tin Shui Wai Community Health Centre, United Christian Nethersole Community Health Service
李嘉俊醫師 基督教聯合那打素社康服務香港中文大學中醫診所暨教研中心 (大埔區) 註冊中醫師	Dr. Lee Ka Chun Registered Chinese Medicine Practitioner, The Chinese University of Hong Kong Chinese Medicine Specialty Clinic cum Clinical Teaching and Research Centre, United Christian Nethersole Community Health Service (Tai Po District)
徐逸芝醫師 基督教聯合那打素社康服務香港中文大學中醫診所暨教研中心 (大埔區) 註冊中醫師	Dr. Tsui Yat Chi Registered Chinese Medicine Practitioner, The Chinese University of Hong Kong Chinese Medicine Specialty Clinic cum Clinical Teaching and Research Centre, United Christian Nethersole Community Health Service (Tai Po District)
凌雅萍醫師 基督教聯合那打素社康服務廣福社區健康中心中醫服務註冊中醫師	Dr. Ling Nga Ping Registered Chinese Medicine Practitioner, Chinese Medicine Service, Kwong Fuk Community Health Centre, United Christian Nethersole Community Health Service
陳詩雅醫師	Dr. Chan Sze Nga
關建慧小姐 基督教香港信義會屯門地區康健中心註冊營養師	Ms. Kwan Kin Wai Registered Dietitian, Tuen Mun District Health Centre, The Evangelical Lutheran Church Social Service – Hong Kong
呂泳彤小姐 屯門地區康健中心社工	Ms. Lui Wing Tung Registered Social Worker, Tuen Mun District Health Centre
紀錦欣小姐 基督教香港信義會屯門地區康健中心一級物理治療師	Ms. Kei Kam Yan Physiotherapist I, Tuen Mun District Health Centre, The Evangelical Lutheran Church Social Service – Hong Kong
蕭婉容小姐 基督教香港信義會屯門地區康健中心一級職業治療師	Ms. Shiu Yuen Yung Physiotherapist I, Tuen Mun District Health Centre, The Evangelical Lutheran Church Social Service – Hong Kong
章兆貞先生 基督教香港信義會屯門地區康健中心一級職業治療師	Mr. Cheung Siu Ching Physiotherapist I, Tuen Mun District Health Centre, The Evangelical Lutheran Church Social Service – Hong Kong
李君哲醫生 仁濟醫院矯形及創傷科顧問醫生暨全關節置換中心主任	Dr. Lee Qunn Jid Director of Total Joint Replacement Centre and Consultant of Department of Orthopaedics & Traumatology at Yan Chai Hospital
長頸鹿醫生	Dr. Giraffe
李忠鍵先生 香港明愛安老服務營養師	Mr. Li Chung Kin Dietitian, Caritas Hong Kong – Services for the Elderly

聯絡我們 Contact Us

總公司 Head Office

九龍觀塘鴻圖道 16 號志成工業大廈 12 樓 1206 室
電話 : 2710 8860 傳真 : 2710 8210

Room 1206, 12/F, Houtex Industrial Building, 16 Hung To Road, Kwun Tong, Kowloon
Tel: 2710 8860 Fax: 2710 8210

「卓思廊」便利店 / 復康店 / 復康生活幹線 "Cheers Gallery" Convenience Store/Rehab Shop/Rehab Links

「卓思廊」北區醫院便利店 (24 小時)

新界粉嶺保健路 9 號北區醫院地下大堂
電話 : 2669 7959 傳真 : 2669 7959

"Cheers Gallery" North District Hospital Convenience Store (24 hrs)

Shop A, G/F Lobby, North District Hospital, 9 Po Kin Road, Fan Ling, N.T.
Tel: 2669 7959 Fax: 2669 7959

「卓思廊」律敦治醫院便利店 (24 小時)

香港灣仔皇后大道東 266 號律敦治醫院地庫 3 樓
電話 : 2836 0780 傳真 : 2836 0780

"Cheers Gallery" Ruttonjee Hospital Convenience Store (24 hrs)

LG3, Ruttonjee Hospital, 266 Queen's Road East, Wan Chai, H.K.
Tel: 2836 0780 Fax: 2836 0780

「卓思廊」威爾斯親王醫院便利店

新界沙田銀城街 30-32 號威爾斯親王醫院李嘉誠專科診所北翼地下
電話 : 2645 0333 傳真 : 2645 0333

"Cheers Gallery" Prince of Wales Hospital Convenience Store

G/F, Li Ka Shing Specialist Clinic (North Wing), Prince of Wales Hospital, 30-32, Ngan Shing Street, Shatin, N.T.
Tel: 2645 0333 Fax: 2645 0333

「卓思廊」大埔醫院便利店

新界大埔全安路 9 號大埔醫院大堂地下
電話 : 2607 6540 傳真 : 2607 6540

"Cheers Gallery" Tai Po Hospital Convenience Store

G012, Main Block, Tai Po Hospital, 9 Chuen On Road, Tai Po, N.T.
Tel: 2607 6540 Fax: 2607 6540

「卓思廊」荔景大樓便利店

新界葵涌荔崗街 10 號瑪嘉烈醫院荔景大樓地下
電話 : 2488 3678 傳真 : 2488 3362

"Cheers Gallery" Lai King Building Convenience Store

G/F, Lai King Building of Princess Margaret Hospital, 10 Lai Kong Street, Kwai Chung, N.T.
Tel: 2488 3678 Fax: 2488 3362

「卓思廊」雅麗氏何妙齡那打素醫院便利店

新界大埔全安路 11 號雅麗氏何妙齡那打素醫院 A 座
電話 : 2788 2218 傳真 : 2788 2055

"Cheers Gallery" Alice Ho Miu Ling Nethersole Hospital Convenience Store

Block A, Alice Ho Miu Ling Nethersole Hospital, 11 Chuen On Road, Tai Po, N.T.
Tel: 2788 2218 Fax: 2788 2055

「卓思廊」博愛醫院復康店 | 便利店 (24 小時)

新界元朗坳頭博愛醫院中座地下大堂
電話 : 2470 7065 傳真 : 2470 7026

"Cheers Gallery" Pok Oi Hospital Rehab Shop | Convenience Store (24 hrs)

G/F Lobby, Central Wing, Pok Oi Hospital, Au Tau, Yuen Long, N.T.
Tel: 2470 7065 Fax: 2470 7026

「卓思廊」葛量洪醫院復康店 | 便利店

香港黃竹坑道 125 號葛量洪醫院主座地下
電話 : 2633 3321 傳真 : 2633 3361

"Cheers Gallery" Grantham Hospital Rehab Shop | Convenience Store

G/F, Main Block, Grantham Hospital, 125 Wong Chuk Hang Road, H.K.
Tel: 2633 3321 Fax: 2633 3361

「卓思廊」將軍澳醫院復康用品專賣店

九龍將軍澳坑口寶寧里 2 號將軍澳醫院 1 樓
電話 : 2208 0456 傳真 : 2209 4764

"Cheers Gallery" Tseung Kwan O Hospital Rehab Shop

1/F, Tseung Kwan O Hospital, 2 Po Ning Lane, Tseung Kwan O, N.T.
Tel: 2208 0456 Fax: 2209 4764

「卓思廊」屯門醫院復康用品專賣店

新界屯門青松觀道屯門醫院主座地下大堂 C&D 舖
電話 : 2463 1905 傳真 : 2463 1906

"Cheers Gallery" Tuen Mun Hospital Rehab Shop

Shops C & D, G/F Lobby, Tuen Mun Hospital, Tsing Chung Koon Road, Tuen Mun, N.T.
Tel: 2463 1905 Fax: 2463 1906

「卓思廊」東區醫院復康用品專賣店

香港柴灣樂民道 3 號東區尤德夫人那打素醫院主座地下大堂
電話 : 2896 6318 傳真 : 2896 6328

"Cheers Gallery" Pamela Youde Nethersole Eastern Hospital Rehab Shop

G/F, Main Block, Pamela Youde Nethersole Eastern Hospital, 3 Lok Man Road, Chai Wan, H.K.
Tel: 2896 6318 Fax: 2896 6328

「卓思廊」瑪嘉烈醫院復康生活幹線

九龍荔枝角瑪嘉烈醫院道 2-10 號主座地下
電話：2488 2123 傳真：2488 2848

"Cheers Gallery" Princess Margaret Hospital Rehab Links

G/F, Main Block, 2-10 Princess Margaret Hospital Road, Lai Chi Kok, Kln.
Tel: 2488 2123 Fax: 2488 2848

「卓思廊」明愛醫院復康店 | 便利店

九龍深水埗永康街 111 號明愛醫院懷明樓三樓
電話：2242 6313 傳真：2242 6312

"Cheers Gallery" Caritas Medical Centre Rehab Links

3/F Wai Ming Block, Caritas Medical Centre, 111 Wing Hong Street,
Sham Shui Po, Kln.
Tel: 2242 6313 Fax: 2242 6312

「卓思廊」北大嶼山醫院復康生活幹線

大嶼山松仁路 8 號 1 樓
電話：2488 1233 傳真：2488 1299

"Cheers Gallery" North Lantau Hospital Rehab Links

1/F, Portion A, North Lantau Hospital, 8 Chung Yan Road, Tung Chung,
Lantau
Tel: 2488 1233 Fax: 2488 1299

「卓思廊」廣華醫院復康店

九龍窩打老道 25 號廣華醫院新大樓地下大堂
電話：2788 1771 傳真：2788 2162

"Cheers Gallery" Kwong Wah Hospital Rehab Shop

G/F, Kwong Wah Hospital New Building, 25 Waterloo Road, Kln.
Tel: 2788 1771 Fax: 2788 2162

「卓思廊」仁濟醫院 Virtual Shop

電話：3111 2386 WhatsApp 訂購專線：5792 6267

"Cheers Gallery" Virtual Shop @ Yan Chai Hospital

Tel: 3111 2386 WhatsApp Ordering Hotline: 5792 6267

「卓思廊」沙田醫院復康店 | 便利店

新界沙田亞公角街 33 號沙田醫院地下
電話：2649 3675 傳真：2648 0369

"Cheers Gallery" Shatin Hospital Rehab Shop | Convenience Store

G/F, Main Block, Shatin Hospital, 33 A Kung Kok Street, Ma On Shan, NT.
Tel: 2649 3675 Fax: 2648 0369

「卓思廊」復康用品專賣店 (南京街)

九龍佐敦南京街 12 號地下
電話：3586 1525 傳真：3586 1526

"Cheers Gallery" Rehab Shop @ Nanking Street

G/F, 12 Nanking Street, Jordan, Kln.
Tel: 3586 1525 Fax: 3586 1526

「卓思廊」復康生活幹線 (協和街)

九龍觀塘協和街 143 號地下
電話：3974 5027 傳真：3974 5097

"Cheers Gallery" Rehab Links @ Hip Wo Street

G/F, 143 Hip Wo Street, Kwun Tong, Kln.
Tel: 3974 5027 Fax: 3974 5097

「卓思廊」復康生活幹線 (窩打老道)

九龍窩打老道 31B 地舖
電話：3709 8798 傳真：3709 8799

"Cheers Gallery" Rehab Links @ Waterloo Road

G/F, 31B Waterloo Road, Kln.
Tel: 3709 8798 Fax: 3709 8799

「卓思廊」復康生活幹線 (街市街)

新界荃灣街市街 150 號地舖
電話：3111 2386 傳真：3111 2376

"Cheers Gallery" Rehab Links @ Market Street

G/F, 150 Tsuen Wan Market Street, Tsuen Wan, N.T.
Tel: 3111 2386 Fax: 3111 2376

「卓思廊」復康生活幹線 (南安街)

香港筲箕灣南安街 51 號國興樓 A4 地舖
電話：3596 3270 傳真：3596 3285

"Cheers Gallery" Rehab Links (Nam On Street)

Shop A4, G/F Kwok Hing Building, No. 51 Nam On Street, Shau Kei Wan,
H.K.
Tel: 3596 3270 Fax: 3596 3285

「卓思廊」復康生活幹線 (皇后大道中)

香港上環皇后大道中 363 號地下
電話：2811 9992 傳真：2811 9993

"Cheers Gallery" Rehab Links (Queen's Road Central)

G/F, 363 Queen Road Central, Sheung Wan, H.K.
Tel: 2811 9992 Fax: 2811 9993

餐飲業務 Catering Service

北區醫院「Cheers Café」

新界粉嶺保健路 9 號北區醫院地下大堂
電話：2672 9733 傳真：2672 9733

"Cheers Café" North District Hospital

Shop B, G/F Lobby, North District Hospital, 9 Po Kin Road, Fan Ling, N.T.
Tel: 2672 9733 Fax: 2672 9733

東區醫院「Cheers Café」

香港東區尤德夫人那打素醫院主座地下大堂
"Cheers Café" Pamela Youde Nethersole Eastern Hospital
G/F, Main Block, Pamela Youde Nethersole Eastern Hospital, 3 Lok Man
Road, Chai Wan, H.K.

教育局教育服務中心「Cheers Café」

九龍塘沙福道 19 號教育局九龍塘教育服務中心東座平台 02 室
電話：2794 1101 傳真：2794 1102

"Cheers Café" Education Bureau Education Service Centre

EP02, Education Bureau Kowloon Tong Education Services Centre,
19 Suffolk Road, Kowloon Tong, Kln.
Tel: 2794 1101 Fax: 2794 1102

「復康速遞」直銷業務**"Rehab Express" Direct Sales Service****「復康速遞」訂購服務**

九龍觀塘偉業街 181 號盈達商業大廈 11 樓 A 室
 訂購熱線：8206 6160 訂購傳真：2710 8322
 網站訂購：www.rehabexpress.com.hk

"Rehab Express" Ordering Service

Flat A, 11/F, Yin Da Commercial Building, 181 Wai Yip Street,
 Kwun Tong, Kln.

Order Hotline: 8206 6160 Order Fax: 2710 8322

Order Online: www.rehabexpress.com.hk

《復康速遞》雜誌

九龍觀塘鴻圖道 16 號志成工業大廈 12 樓 1206 室
 電話：2710 8860 傳真：2710 8210

"Rehab Express" Magazine

Room 1206, 12/F, Houtex Industrial Building, 16 Hung To Road, Kwun
 Tong, Kln.

Tel: 2710 8860

Fax: 2710 8210

「友善特營」便利店**"Friendchising" Convenience Store****將軍澳醫院 7-Eleven**

九龍將軍澳坑口寶寧里 2 號將軍澳醫院地下
 電話：2779 4535 傳真：2779 4535

7-Eleven@Tseung Kwan O Hospital

G/F, Tseung Kwan O Hospital, 2 Po Ning Lane, Tseung Kwan O, N.T.

Tel: 2779 4535

Fax: 2779 4535

香港教育大學 7-Eleven

新界大埔露屏路 10 號香港教育大學中央大樓 C 座地下 C-P-13 室
 電話：2948 0922 傳真：2948 0922

7-Eleven@The Education University of Hong Kong

Room C-P-13, G/F, Block C, Education University of Hong Kong, Lo Ping
 Road, Taipo, N.T.

Tel: 2948 0922

Fax: 2948 0922

機構消費計劃**Organizational Consumption Project****醫院管理局職員合作社**

九龍亞皆老街 147B 醫院管理局大樓 207-S 室
 電話：2300 6981 傳真：2194 6867

Hospital Authority Staff Co-op Shop

Room 207S, Hospital Authority Building, 147B Argle Street, Kln.

Tel: 2300 6981

Fax: 2194 6867

「樂協」社團優惠坊（稅務大樓）

香港灣仔告士打道 5 號稅務大樓地下 2 號舖
 電話：2157 0051 傳真：2157 1497

Cheers Coop (Revenue Tower)

No. 2 G/F, Revenue Tower, 5 Gloucester Road, Wan Chai, H.K.

Tel: 2157 0051

Fax: 2157 1497

「樂協」便利店（上環港澳碼頭）

香港上環港澳客運碼頭內碼頭第一層離境等候大堂 3 號舖
 電話：6659 6913

"Cheers Coop" Convenience Store (HK Macau Ferry Terminal)

Shop No.3, Departure Waiting Hall, Deck 1, Inner Pier of the HK - Macau
 Ferry Terminal, Sheung Wan, H.K.

Tel: 6659 6913

「悅購網」

「悅購網」網上商店：www.cheerspointnet.com.hk

"Cheers Point Net"

"Cheers Point Net" Online Shop：www.cheerspointnet.com.hk

社企淘

SE Mail：www.SEmail.hk

「卓思」市場推廣服務**"Cheers" Marketing & Promotion Service**

九龍觀塘鴻圖道 16 號志成工業大廈 12 樓 1206 室

電話：2710 8860

傳真：2710 8210

Room 1206, 12/F, Houtex Industrial Building, 16 Hung To Road, Kwun
 Tong, Kln.

Tel: 2710 8860

Fax: 2710 8210

傳單速遞

九龍觀塘鴻圖道 16 號志成工業大廈 12 樓 1206 室

電話：2710 8860

傳真：2710 8210

Handbill Service

Room 1206, 12/F, Houtex Industrial Building, 16 Hung To Road, Kwun
 Tong, Kln.

Tel: 2710 8860

Fax: 2710 8210

清潔業務**Cleansing Service**

九龍觀塘鴻圖道 16 號志成工業大廈 12 樓 1206 室

電話：2710 8860

傳真：2710 8210

Room 1206, 12/F, Houtex Industrial Building, 16 Hung To Road, Kwun
 Tong, Kln.

Tel: 2710 8860

Fax: 2710 8210

